

# CITY OF IMPERIAL

## ADDENDUM NO. 2

### TO THE CONTRACT DOCUMENTS AND SPECIFICATIONS FOR THE CITY OF IMPERIAL BID NO. 2014-04

#### STREET IMPROVEMENT PROJECT ASPHALT RUBBER COMPOSITE LAYER OVERLAY ON DESIGNATED STREETS

Bidders are advised that the contract documents and specifications for the above referenced contract are hereby amended in the following manner and the following manner only:

Revised Bid Schedule: Due to a time constraint to secure an encroachment permit from Caltrans to work in the vicinity of SR-86, 15th. Street has been removed from the bidding process. Therefore, the attached Bid Schedule with the new quantities shall be used.

Revised construction project plans which no longer illustrate 15th. Street as part of this bidding process (Attached).

**Bidder shall sign this addendum and fax a copy of this addendum back to the office of the City Clerk as proof of receipt (Fax Number 760-355-4718). Bidder shall also include a signed copy of this Addendum No. 1 with their bid proposal.**

Dated: August 13, 2014  
Faxed/Emailed to  
Plan Holders list

By:   
Debra Jackson, City Clerk

By: \_\_\_\_\_  
(Bidder's Company Name)

Date Received by Bidder:

\_\_\_\_\_  
(Bidder's Signature)

\_\_\_\_\_  
(Type or Print Name)

**CITY OF IMPERIAL**  
**PROPOSAL BID SHEET 1/3**  
 FOR  
**STREET IMPROVEMENT PROJECT**  
**ASPHALT RUBBER COMPOSITE LAYER OVERLAY ON DESIGNATED**  
**STREETS**

BID NO. 2014-04

Item No.	Description	Units	Estimate Quantity	Unit Price	Amount
1.	Mobilization / Bonds / Insurances	LS	1	\$	\$
2.	Preparation/Implementation Traffic Control Plan, Public Safety and Notification.	LS	1	\$	\$
3.	Water Pollution Control	LS	1	\$	\$
4.	Tree Trimming	LS	1	\$	\$
5.	Concrete Curb & Gutter	LF	50	\$	\$
6.	6" Concrete Cross Gutter	SF	50	\$	\$
7.	System 2 Stop Points	LS	6	\$	\$
8.	1" Grinding / Cold Plane Existing AC	SF	4,104	\$	\$
9.	3/4" AC Level Course:1/2" HMA Type A /including SS1h Tack Coat	TON	5,195	\$	\$
10.	3/8" Asphalt Rubber Aggregate Membrane (ARAM)	SF	1, 108,157	\$	\$
11.	Type II Slurry Seal	SF	1, 108,157	\$	\$
12.	Remove & Replace 4" Asphalt Concrete12" Class II Base Pavement @ Tiger Lily Ln	SF	225	\$	\$
13.	Raise and Adjust Manholes Covers	EA	106	\$	\$
14.	Raise and Adjust Water Valve Covers	EA	203	\$	\$
15.	Reset Monument Well	EA	5	\$	\$
16.	New pavement striping / raised markers and signage	LS	1	\$	\$
17.					
18.					
19.					
20.					
	<b>TOTAL BID PROPOSAL</b>			\$	\$

**CITY OF IMPERIAL**  
**PROPOSAL BID SHEET 2/3**  
FOR  
**STREET IMPROVEMENT PROJECT**  
**ASPHALT RUBBER COMPOSITE LAYER OVERLAY ON DESIGNATED**  
**STREETS**

BID NO. 2014-04

**NOTE 1: THE ESTIMATED QUANTITIES INDICATED ABOVE ARE APPROXIMATE. THE ENGINEER WILL NOT ASSUME RESPONSIBILITY FOR THE QUANTITIES ILLUSTRATED IN THE PROJECT PLANS. IT IS THE RESPONSIBILITY OF THE CONTRACTOR TO ESTABLISH THE QUANTITIES.**

**NOTE 2: THE LOWEST RESPONSIVE BID WILL BE BASED ON THE LOWEST TOTAL BID PROPOSAL.**

TOTAL AMOUNT OF BID PROPOSAL (NUMBERS)\_\_\_\_\_

TOTAL AMOUNT OF BID PROPOSAL (WORDS)\_\_\_\_\_

---

Note: The estimated quantities listed in the Proposal Bid Sheet(s) are supplied to give an indication of the general scope of the work, but the accuracy of these figures is not guaranteed and the bidder shall make his own estimates from the drawings. In case of a variation between the unit price and the totals shown by the bidder, the unit price will be considered to be the bid.

Prices shall include all work and material required in the Plans and Specifications although not specifically on the Bid Schedules.

Bids are to be submitted for the entire work.

The bidder shall set forth for each unit basis item for work a unit price and a total for the item and for each lump-sum item a total for all components considered to be included in the bid item, all in clearly legible figures in the respective spaces provided for this purpose. In the case of unit basis items, the amount set forth under the "total" column shall be the extension of the unit price bid on the basis of the estimated quantity for the item. In the case of discrepancy between the unit price and the total set forth for a unit basis item, the unit price shall prevail, provided, however, if the amount set forth as a unit price is ambiguous, unintelligible or uncertain for any cause, or is omitted, or is the same amount as the entry in the "Total" column, then the amount set forth in the "Total" column for the item shall prevail and shall be divided by the estimated quantity for the item and the price thus obtained shall be the unit price. Final payment shall be determined by the Engineer from measured quantities of work performed based upon the unit price.

**CITY OF IMPERIAL**  
**PROPOSAL BID SHEET 3/3**  
FOR  
**STREET IMPROVEMENT PROJECT**  
**ASPHALT RUBBER COMPOSITE LAYER OVERLAY ON DESIGNATED**  
**STREETS**

**BID NO. 2014-04**

The Contract prices paid for the work shall include full compensation for all taxes which the contractor is required to pay, whether imposed by federal, state, or local government, including, without being limited to, federal excise tax. No tax exemption certificate or any document designed to exempt the contractor from payment of any tax will be furnished to the contractor by the City as to any tax or labor, services, materials, transportation, or any other items furnished pursuant to the contract.

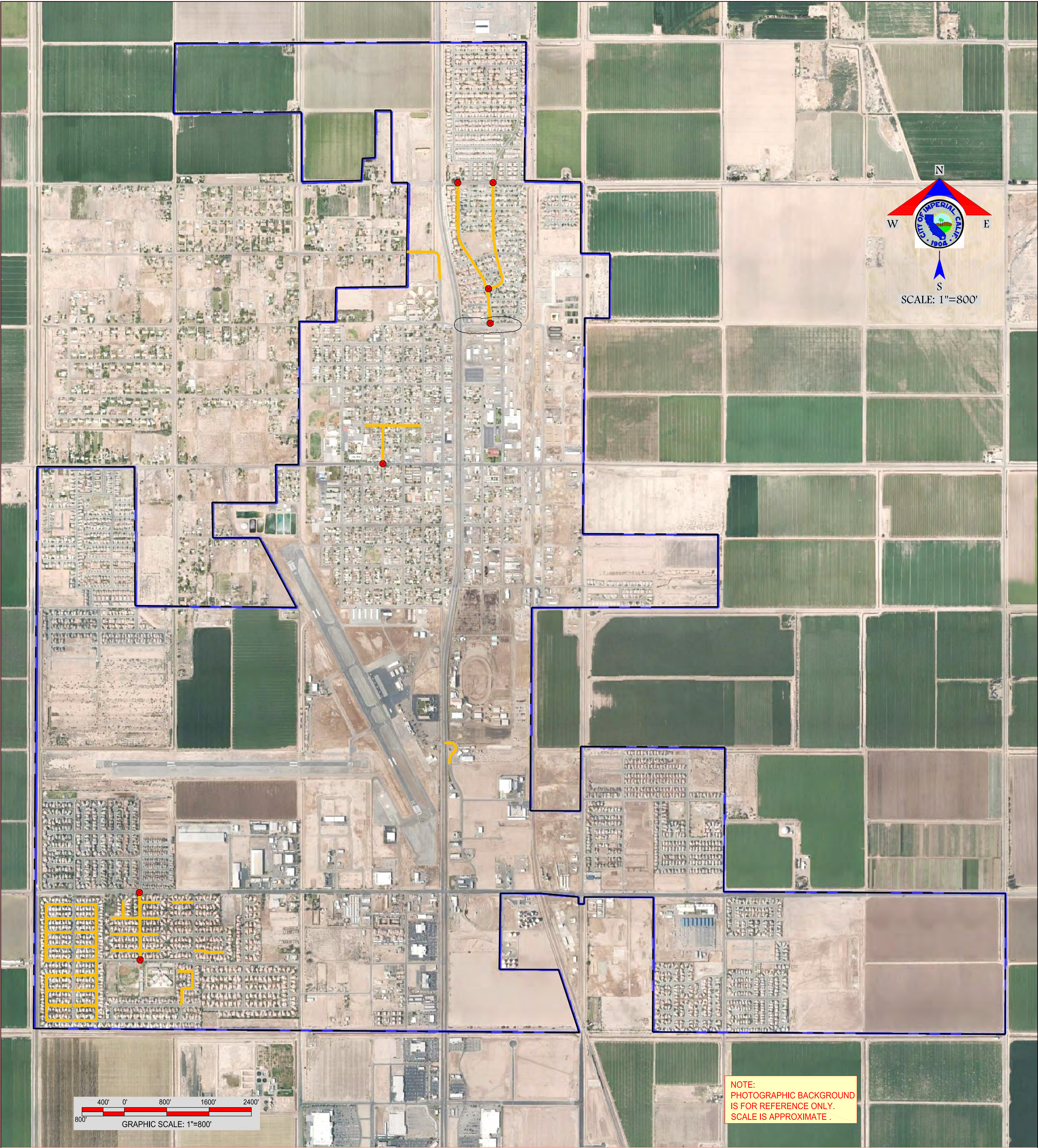
The City of Imperial retains the right to award on the basis of bids received or to reject any or all bids.

No conditional bids will be accepted.

---

Bidder's Name and Telephone Number





LEGEND

PAVEMENT SYSTEM 2

YUCCA STREET STREET NAME

STOP POINT



420 South Imperial Avenue  
Imperial, CA 92251  
Ph: (760) 355-3840 • Fax: (760)355-4718

PLANNING & DEVELOPMENT DEPARTMENT

STREET IMPROVEMENT PROJECT  
ASPHALT RUBBER COMPOSITE LAYER  
OVERLAY ON DESIGNATED STREETS  
- PHASE I -

DATE: 08/13/2014

SHEET  
**1**

OF  
**4** SHEETS





LEGEND

PAVEMENT SYSTEM 2

YUCCA STREET STREET NAME

STOP POINT



420 South Imperial Avenue  
Imperial, CA 92251  
Ph: (760) 355-3840 • Fax: (760)355-4718

PLANNING & DEVELOPMENT DEPARTMENT  
**STREET IMPROVEMENT PROJECT**  
**ASPHALT RUBBER COMPOSITE LAYER**  
**OVERLAY ON DESIGNATED STREETS**  
**- PHASE I -**  
DATE: 08/13/2014

SHEET  
**2**  
OF **4** SHEETS





LEGEND

PAVEMENT SYSTEM 2

YUCCA STREET STREET NAME

STOP POINT

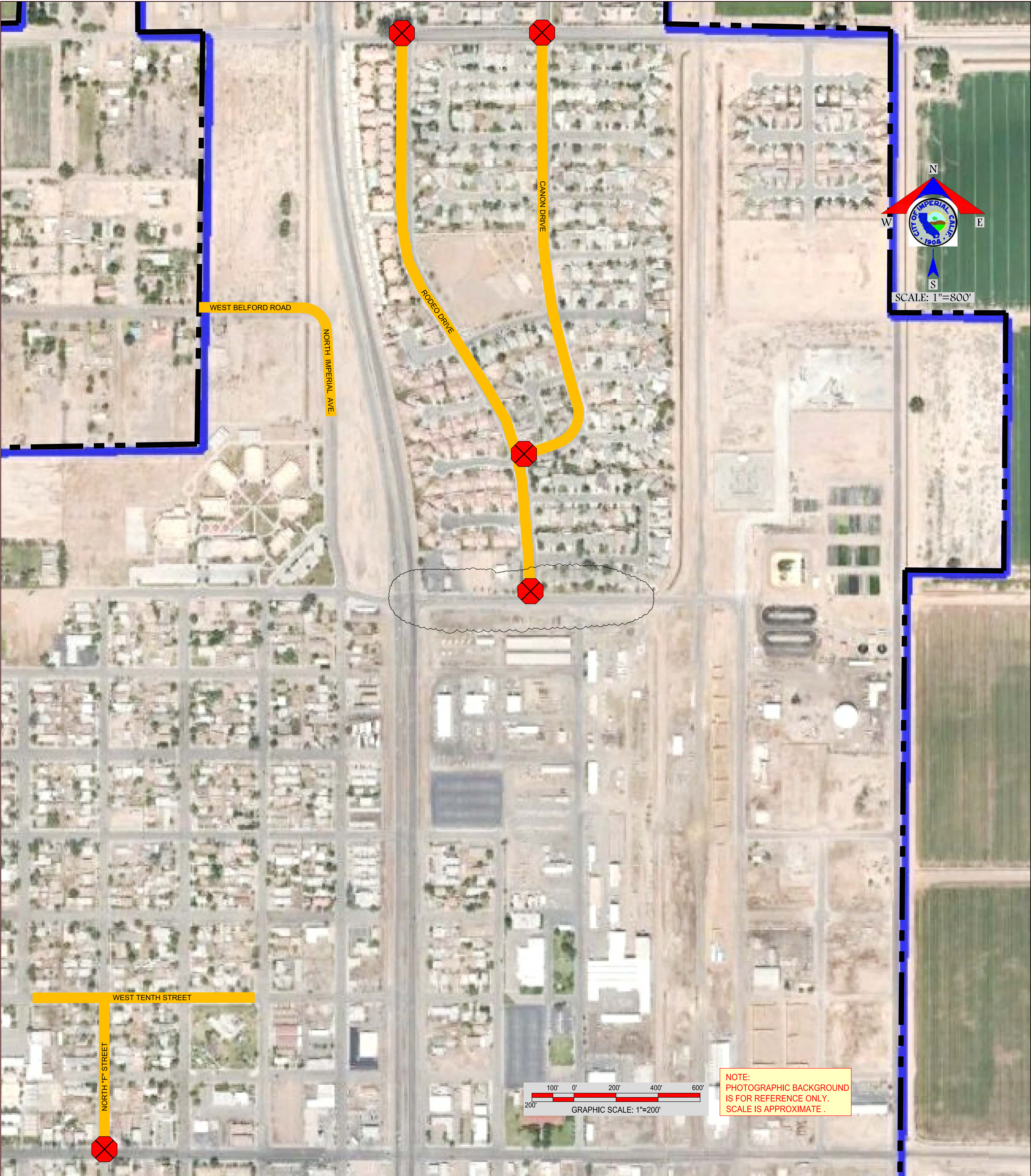


420 South Imperial Avenue  
Imperial, CA 92251  
Ph: (760) 355-3840 • Fax: (760)355-4718

PLANNING & DEVELOPMENT DEPARTMENT  
**STREET IMPROVEMENT PROJECT**  
**ASPHALT RUBBER COMPOSITE LAYER**  
**OVERLAY ON DESIGNATED STREETS**  
**- PHASE I -**  
DATE: 08/13/2014

SHEET  
**3**  
OF **4** SHEETS





LEGEND

- PAVEMENT SYSTEM 2
- STREET NAME
- STOP POINT



420 South Imperial Avenue  
Imperial, CA 92251  
Ph: (760) 355-3840 • Fax: (760)355-4718

PLANNING & DEVELOPMENT DEPARTMENT

STREET IMPROVEMENT PROJECT  
ASPHALT RUBBER COMPOSITE LAYER  
OVERLAY ON DESIGNATED STREETS  
- PHASE I -

DATE: 08/13/2014