

DATE SUBMITTED 12/27/2021
 SUBMITTED BY COMMUNITY DEVELOPMENT DIRECTOR
 DATE ACTION REQUIRED 01/05/2021

COUNCIL ACTION (x)
 PUBLIC HEARING REQUIRED ()
 RESOLUTION ()
 ORDINANCE 1ST READING ()
 ORDINANCE 2ND READING ()
 CITY CLERK'S INITIALS (em)

**IMPERIAL CITY COUNCIL
 AGENDA ITEM**

SUBJECT: DISCUSSION/ACTION:
 RUSSELL COURT SUBDIVISION UNIT 3
 1. APPROVAL AND ACCEPTANCE OF OFF-SITE STREET IMPROVEMENTS.
 2. AUTHORIZE BOND REDUCTION UP TO 90% AND TO KEEP THE REMAINING 10% FOR THE ONE-YEAR WARRANTY PERIOD.

DEPARTMENT COMMUNITY DEVELOPMENT
 INVOLVED:

BACKGROUND/SUMMARY:
 City staff conducted regular field inspections during the construction of the off-site street improvements for the subject project and a final walk through was completed on December 15, 2021. At this time, the improvements were found to be completed. See Exhibits "A" attached herewith for details.

One-Year warranty for labor and materials will end on December 15, 2022.

Now the developer is requesting that the City accept the improvements and reduce the amount accordingly.

FISCAL IMPACT: NO FISCAL IMPACT

ADMIN SERVICES SIGN INITIALS [Signature]

STAFF RECOMMENDATION:
 1. Staff recommends approval and acceptance of off-site street improvements of Russell Court Subdivision Unit 3.
 2. Staff recommends authorization of bond reduction up to 90% and to keep the remaining 10% for the One-Year warranty period.

DEPT. INITIALS GM

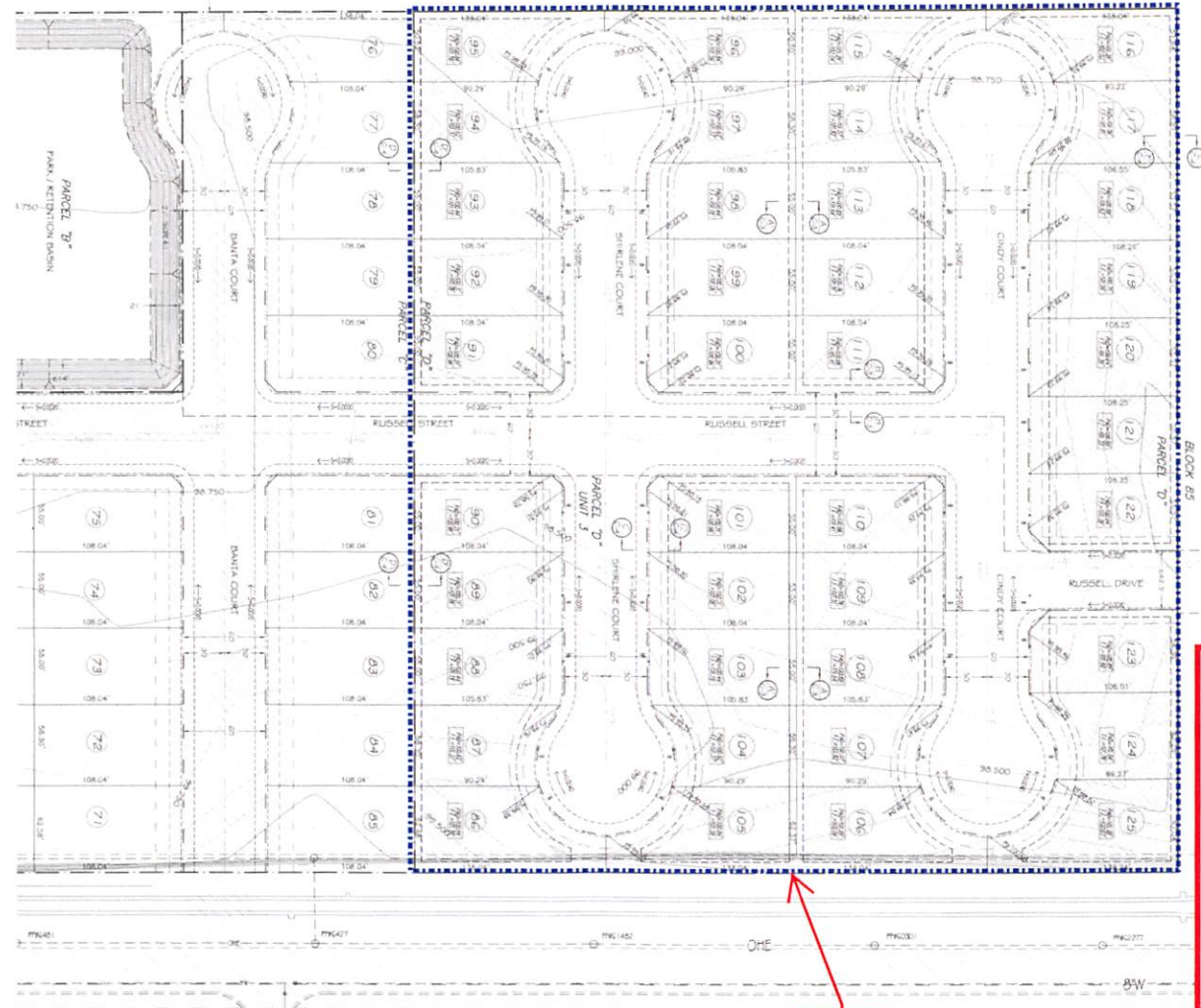
MANAGER'S RECOMMENDATION: approve

CITY MANAGER'S INITIALS [Signature]

MOTION:

SECONDE APPROVED () REJECTED ()
 D: DISAPPROVED () DEFERRED ()
 AYES:
 NAYES:
 ABSENT: REFERRED TO:

Exhibit "A"



Russell Subdivision Unit 3

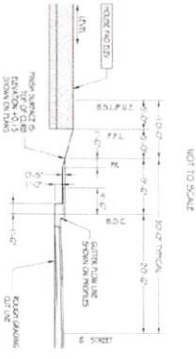
A. GRADING NOTES

1. ALL GRADING SHALL BE IN ACCORDANCE WITH THE CITY ENGINEER'S APPROVED GRADING PLAN AND THE CITY ENGINEER'S APPROVED EROSION CONTROL PLAN. THE GRADING SHALL BE IN ACCORDANCE WITH THE CITY ENGINEER'S APPROVED GRADING PLAN AND THE CITY ENGINEER'S APPROVED EROSION CONTROL PLAN.

2. ALL GRADING SHALL BE IN ACCORDANCE WITH THE CITY ENGINEER'S APPROVED GRADING PLAN AND THE CITY ENGINEER'S APPROVED EROSION CONTROL PLAN. THE GRADING SHALL BE IN ACCORDANCE WITH THE CITY ENGINEER'S APPROVED GRADING PLAN AND THE CITY ENGINEER'S APPROVED EROSION CONTROL PLAN.

3. ALL GRADING SHALL BE IN ACCORDANCE WITH THE CITY ENGINEER'S APPROVED GRADING PLAN AND THE CITY ENGINEER'S APPROVED EROSION CONTROL PLAN. THE GRADING SHALL BE IN ACCORDANCE WITH THE CITY ENGINEER'S APPROVED GRADING PLAN AND THE CITY ENGINEER'S APPROVED EROSION CONTROL PLAN.

TYPICAL CROSS SECTION A-A



TYPICAL CROSS SECTION B-B



APPROVED
CITY OF IMPERIAL

C-3
3-14

PROJECT DESCRIPTION: RUSSELL COURT SUBDIVISION - UNIT 3
DRAWING DESCRIPTION: ROUGH GRADING PLAN, DETAILS AND NOTES
LOCATION: CITY OF IMPERIAL, CA

	<p>APPROVED BY CITY OF IMPERIAL ACTING CITY ENGINEER <i>Carlos Romero</i> 9/26/20 CARLOS ROMERO, P.E. 55432</p>	<p>CLIENT OWNER: SHINE REAL ESTATE INVESTMENT LLC ADDRESS: 806 SOUTH 70 STREET, IMPERIAL, CA 92251 TELEPHONE: (760) 936-3869</p>	<p>DESIGNER: Proterra proterraus@gmail.com (760) 235-5185 Mobile</p>	<p>DATE: 06/28/20</p>
--	---	--	--	-----------------------