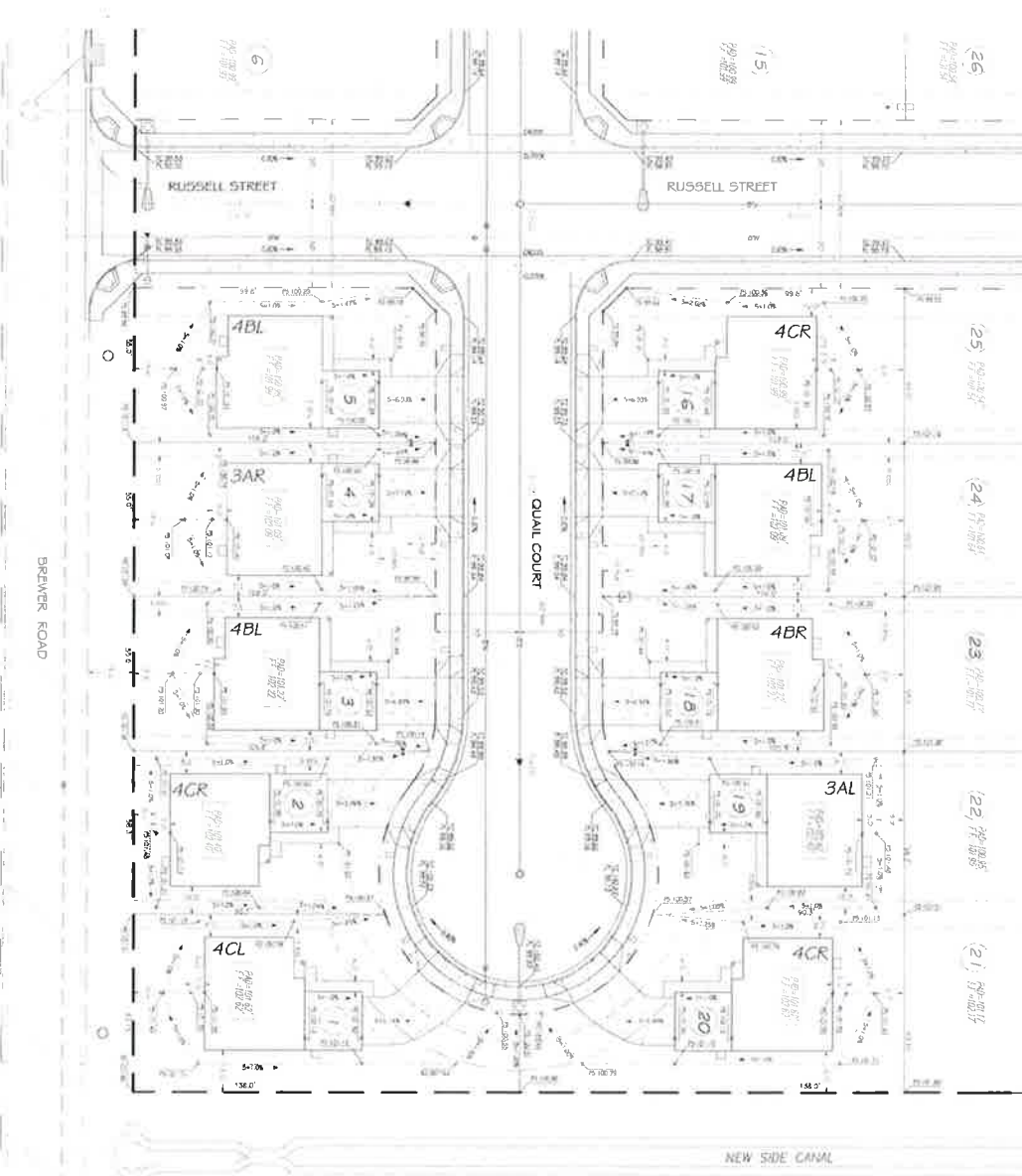


DATE SUBMITTED 01/29/2020
 SUBMITTED BY COMMUNITY DEVELOPMENT DIRECTOR
 DATE ACTION REQUIRED 02/05/2020

COUNCIL ACTION (x)
 PUBLIC HEARING REQUIRED ()
 RESOLUTION ()
 ORDINANCE 1ST READING ()
 ORDINANCE 2ND READING ()
 CITY CLERK'S INITIALS [Signature]

**IMPERIAL CITY COUNCIL
 AGENDA ITEM**

SUBJECT: DISCUSSION/ACTION: RUSSELL COURT SUBDIVISION UNIT 1 - PHASES 1A TO 1D - FM 27/57-60 1. APPROVAL AND ACCEPTANCE OF OFF-SITE STREET IMPROVEMENTS. 2. AUTHORIZE BOND REDUCTION.	
DEPARTMENT INVOLVED: COMMUNITY DEVELOPMENT	
BACKGROUND/SUMMARY: City staff conducted regular field inspections during the construction of the off-site street improvements for the subject project and a final walk through was completed on January 07, 2020. At this time, the improvements were found to be completed. See Exhibits "A" to "D" attached herewith for details. One-Year warranty for labor and materials will end on January 07, 2021. Now the developer is requesting that the City accept the improvements and reduce the amount accordingly.	
FISCAL IMPACT: NO FISCAL IMPACT	ADMIN SERVICES SIGN INITIALS <u>[Signature]</u>
STAFF RECOMMENDATION: 1. Staff recommends approval and acceptance of off-site street improvements of Russell Court Subdivision Unit 1 - Phases 1A to 1D. 2. Staff recommends authorization of bond reduction up to 90% and to keep the remaining 10% for the One-Year warranty period.	DEPT. INITIALS <u>DM</u>
MANAGER'S RECOMMENDATION: <u>approve</u>	CITY MANAGER'S INITIALS <u>[Signature]</u>
MOTION: SECONDE APPROVED () REJECTED () D: DISAPPROVED () DEFERRED () AYES: NAYES: ABSENT: REFERRED TO:	

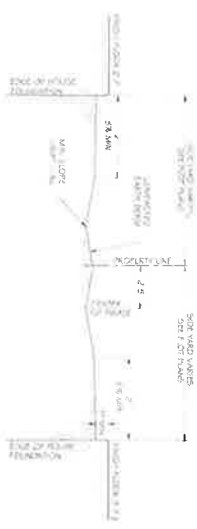


PRECISE GRADING PLAN - PHASE 1A
SCALE: 1" = 20'

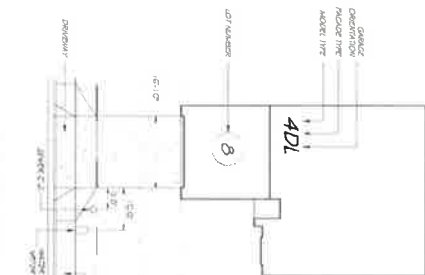


APPROVED
City of Arpaia
2024.04.24

SIDE YARD GRADING DETAIL
NOT TO SCALE



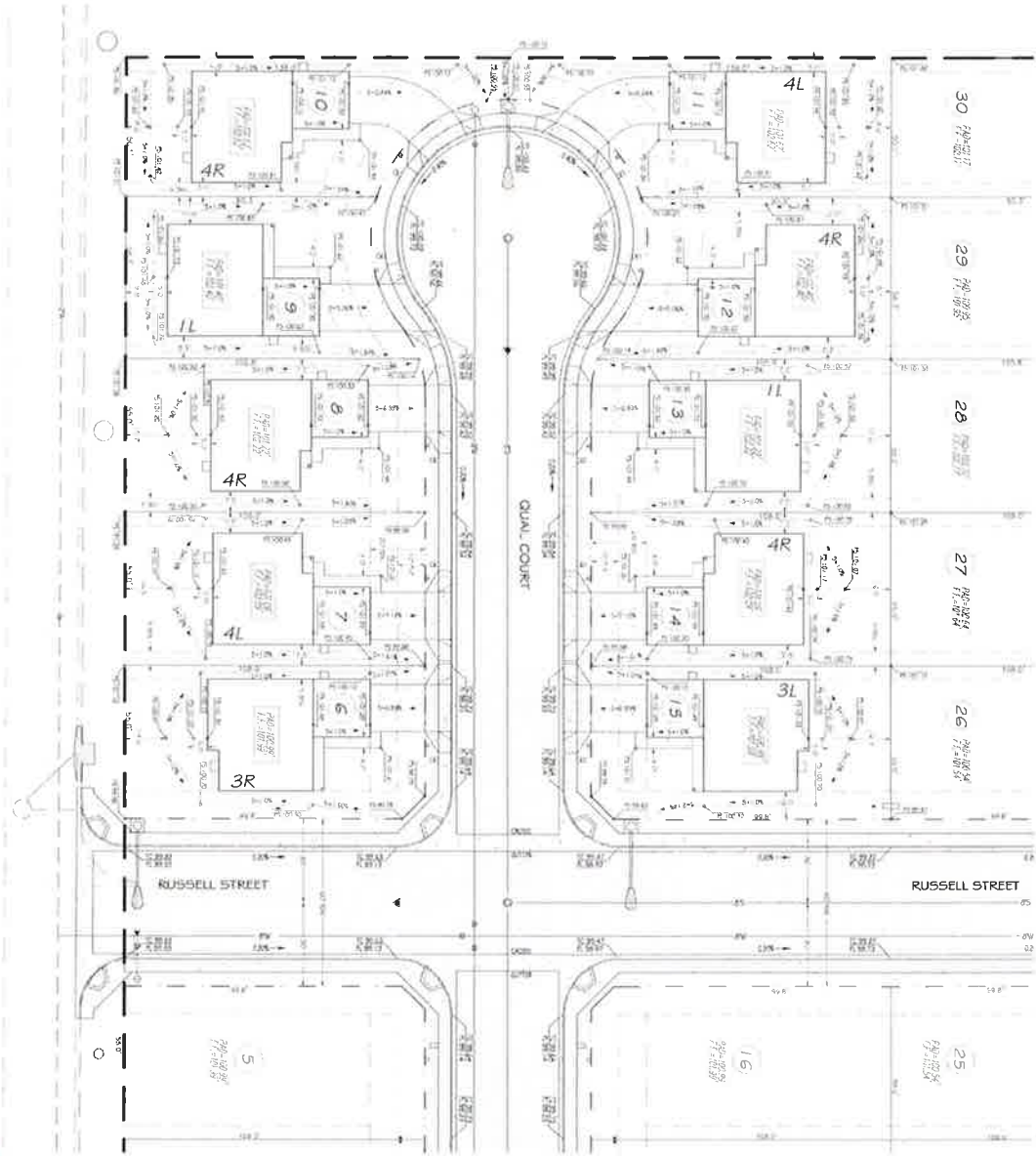
HOUSE MODEL LEGEND
NOT TO SCALE



DRAWING STATIONS

NO.	DATE	BY	REVISION
1	04/24/24	PR	ISSUE FOR PERMITS
2	04/24/24	PR	ISSUE FOR PERMITS
3	04/24/24	PR	ISSUE FOR PERMITS
4	04/24/24	PR	ISSUE FOR PERMITS
5	04/24/24	PR	ISSUE FOR PERMITS
6	04/24/24	PR	ISSUE FOR PERMITS
7	04/24/24	PR	ISSUE FOR PERMITS
8	04/24/24	PR	ISSUE FOR PERMITS
9	04/24/24	PR	ISSUE FOR PERMITS
10	04/24/24	PR	ISSUE FOR PERMITS
11	04/24/24	PR	ISSUE FOR PERMITS
12	04/24/24	PR	ISSUE FOR PERMITS
13	04/24/24	PR	ISSUE FOR PERMITS
14	04/24/24	PR	ISSUE FOR PERMITS
15	04/24/24	PR	ISSUE FOR PERMITS
16	04/24/24	PR	ISSUE FOR PERMITS
17	04/24/24	PR	ISSUE FOR PERMITS
18	04/24/24	PR	ISSUE FOR PERMITS
19	04/24/24	PR	ISSUE FOR PERMITS
20	04/24/24	PR	ISSUE FOR PERMITS
21	04/24/24	PR	ISSUE FOR PERMITS
22	04/24/24	PR	ISSUE FOR PERMITS
23	04/24/24	PR	ISSUE FOR PERMITS
24	04/24/24	PR	ISSUE FOR PERMITS
25	04/24/24	PR	ISSUE FOR PERMITS
26	04/24/24	PR	ISSUE FOR PERMITS

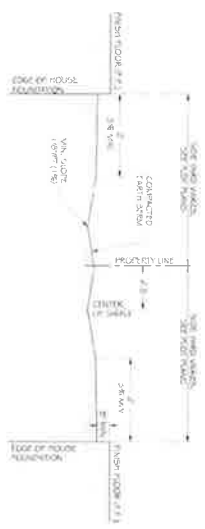
Exhibit "A"
Sheet 2 of 2



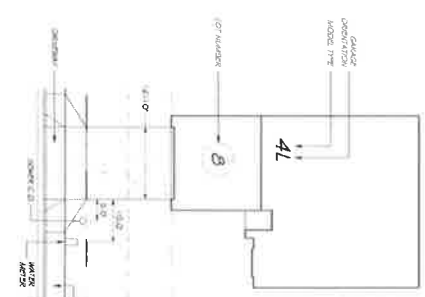
PRECISE GRADING PLAN - PHASE 1B
SCALE: 1" = 30'

APPROVED
CITY OF ANIMAS
2014-02-19

SIDE YARD GRADING DETAIL
SCALE: 1/4" = 1'-0"



HOUSE MODEL LEGEND
SCALE: 1/4" = 1'-0"



DRIVEWAY STATIONS

LOT #	DRIVEWAY	STREET NAME	DATE	STREET NAME
LOT 1	DRIVEWAY	QUAL COURT	01/11/10	QUAL COURT
LOT 2	DRIVEWAY	QUAL COURT	01/11/10	QUAL COURT
LOT 3	DRIVEWAY	QUAL COURT	01/11/10	QUAL COURT
LOT 4	DRIVEWAY	QUAL COURT	01/11/10	QUAL COURT
LOT 5	DRIVEWAY	QUAL COURT	01/11/10	QUAL COURT
LOT 6	DRIVEWAY	QUAL COURT	01/11/10	QUAL COURT
LOT 7	DRIVEWAY	QUAL COURT	01/11/10	QUAL COURT
LOT 8	DRIVEWAY	QUAL COURT	01/11/10	QUAL COURT
LOT 9	DRIVEWAY	QUAL COURT	01/11/10	QUAL COURT
LOT 10	DRIVEWAY	QUAL COURT	01/11/10	QUAL COURT
LOT 11	DRIVEWAY	QUAL COURT	01/11/10	QUAL COURT
LOT 12	DRIVEWAY	QUAL COURT	01/11/10	QUAL COURT
LOT 13	DRIVEWAY	QUAL COURT	01/11/10	QUAL COURT
LOT 14	DRIVEWAY	QUAL COURT	01/11/10	QUAL COURT
LOT 15	DRIVEWAY	QUAL COURT	01/11/10	QUAL COURT
LOT 16	DRIVEWAY	QUAL COURT	01/11/10	QUAL COURT
LOT 17	DRIVEWAY	QUAL COURT	01/11/10	QUAL COURT
LOT 18	DRIVEWAY	QUAL COURT	01/11/10	QUAL COURT
LOT 19	DRIVEWAY	QUAL COURT	01/11/10	QUAL COURT
LOT 20	DRIVEWAY	QUAL COURT	01/11/10	QUAL COURT
LOT 21	DRIVEWAY	QUAL COURT	01/11/10	QUAL COURT
LOT 22	DRIVEWAY	QUAL COURT	01/11/10	QUAL COURT
LOT 23	DRIVEWAY	QUAL COURT	01/11/10	QUAL COURT
LOT 24	DRIVEWAY	QUAL COURT	01/11/10	QUAL COURT
LOT 25	DRIVEWAY	QUAL COURT	01/11/10	QUAL COURT
LOT 26	DRIVEWAY	QUAL COURT	01/11/10	QUAL COURT
LOT 27	DRIVEWAY	QUAL COURT	01/11/10	QUAL COURT
LOT 28	DRIVEWAY	QUAL COURT	01/11/10	QUAL COURT
LOT 29	DRIVEWAY	QUAL COURT	01/11/10	QUAL COURT
LOT 30	DRIVEWAY	QUAL COURT	01/11/10	QUAL COURT

Exhibit "B"
Sheet 2 of 2

DRAWN BY: [Name] DATE: [Date]	2 22	PROJECT DESCRIPTION: RUSSELL COURT SUBDIVISION UNIT 1 - PHASE 1B	APPROVED BY: [Signature] REGISTERED PROFESSIONAL ENGINEER	PROJECT NO.: 55432	APPROVED BY: [Signature] REGISTERED PROFESSIONAL ENGINEER	PROJECT NO.: 55432	DRAWING RESERVATION: PRECISE GRADING PLAN	CLIENT/OWNER: SHAW REAL ESTATE INVESTMENTS INC. 808 SOUTH 15 TH STREET, IMPERIAL, CA 92250 TELEPHONE: (760) 936-3489	PROJECT LOCATION: LOTS 1-30, IMPERIAL, CA	DATE: [Date]	SHEET NO.: [Number]
		LOCATION: [Address]									

RUSSELL COURT SUBDIVISION - UNIT 1

PRECISE GRADING PLAN - PHASE 1C

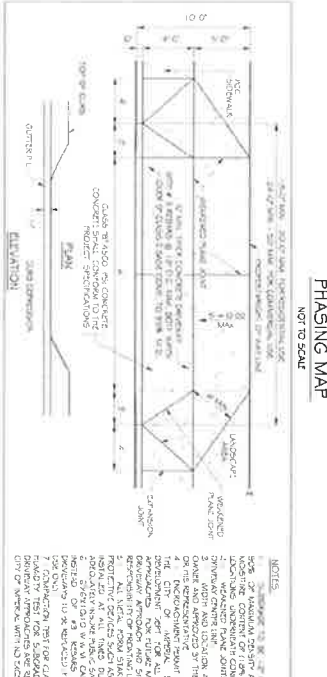
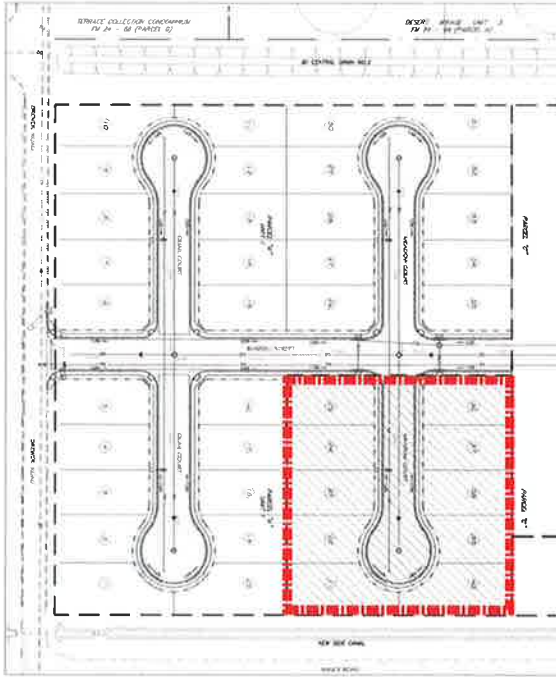
Exhibit "C"

Sheet 1 of 2

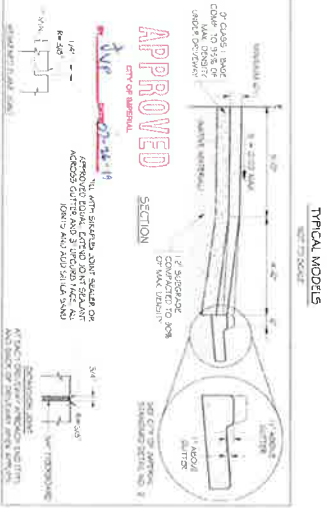
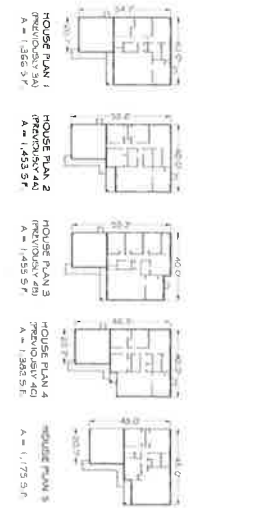


HOUSE PLOTS AND FINISHED GRADING SPECIFICATIONS

1. HOUSE PLOTS AND FINISHED GRADING SPECIFICATIONS SHALL BE SUBMITTED TO THE CITY ENGINEER FOR REVIEW AND APPROVAL. THE CITY ENGINEER SHALL REVIEW THE SUBMISSIONS FOR COMPLIANCE WITH THE CITY ENGINEER'S STANDARDS AND SPECIFICATIONS FOR FINISHED GRADING. THE CITY ENGINEER SHALL REVIEW THE SUBMISSIONS FOR COMPLIANCE WITH THE CITY ENGINEER'S STANDARDS AND SPECIFICATIONS FOR FINISHED GRADING. THE CITY ENGINEER SHALL REVIEW THE SUBMISSIONS FOR COMPLIANCE WITH THE CITY ENGINEER'S STANDARDS AND SPECIFICATIONS FOR FINISHED GRADING.
2. HOUSE PLOTS AND FINISHED GRADING SPECIFICATIONS SHALL BE SUBMITTED TO THE CITY ENGINEER FOR REVIEW AND APPROVAL. THE CITY ENGINEER SHALL REVIEW THE SUBMISSIONS FOR COMPLIANCE WITH THE CITY ENGINEER'S STANDARDS AND SPECIFICATIONS FOR FINISHED GRADING. THE CITY ENGINEER SHALL REVIEW THE SUBMISSIONS FOR COMPLIANCE WITH THE CITY ENGINEER'S STANDARDS AND SPECIFICATIONS FOR FINISHED GRADING.
3. HOUSE PLOTS AND FINISHED GRADING SPECIFICATIONS SHALL BE SUBMITTED TO THE CITY ENGINEER FOR REVIEW AND APPROVAL. THE CITY ENGINEER SHALL REVIEW THE SUBMISSIONS FOR COMPLIANCE WITH THE CITY ENGINEER'S STANDARDS AND SPECIFICATIONS FOR FINISHED GRADING. THE CITY ENGINEER SHALL REVIEW THE SUBMISSIONS FOR COMPLIANCE WITH THE CITY ENGINEER'S STANDARDS AND SPECIFICATIONS FOR FINISHED GRADING.
4. HOUSE PLOTS AND FINISHED GRADING SPECIFICATIONS SHALL BE SUBMITTED TO THE CITY ENGINEER FOR REVIEW AND APPROVAL. THE CITY ENGINEER SHALL REVIEW THE SUBMISSIONS FOR COMPLIANCE WITH THE CITY ENGINEER'S STANDARDS AND SPECIFICATIONS FOR FINISHED GRADING. THE CITY ENGINEER SHALL REVIEW THE SUBMISSIONS FOR COMPLIANCE WITH THE CITY ENGINEER'S STANDARDS AND SPECIFICATIONS FOR FINISHED GRADING.
5. HOUSE PLOTS AND FINISHED GRADING SPECIFICATIONS SHALL BE SUBMITTED TO THE CITY ENGINEER FOR REVIEW AND APPROVAL. THE CITY ENGINEER SHALL REVIEW THE SUBMISSIONS FOR COMPLIANCE WITH THE CITY ENGINEER'S STANDARDS AND SPECIFICATIONS FOR FINISHED GRADING. THE CITY ENGINEER SHALL REVIEW THE SUBMISSIONS FOR COMPLIANCE WITH THE CITY ENGINEER'S STANDARDS AND SPECIFICATIONS FOR FINISHED GRADING.



PHASE	LOTS	PLAN 1	PLAN 2	PLAN 3	PLAN 4	PLAN 5	TOTAL
1A	1, 2, 3, 4, 5, 6, 7, 8, 9, 10, 11, 12, 13, 14, 15, 16, 17, 18, 19, 20, 21, 22, 23, 24, 25, 26, 27, 28, 29, 30, 31, 32, 33, 34, 35, 36, 37, 38, 39, 40, 41, 42, 43, 44, 45, 46, 47, 48, 49, 50, 51, 52, 53, 54, 55, 56, 57, 58, 59, 60, 61, 62, 63, 64, 65, 66, 67, 68, 69, 70, 71, 72, 73, 74, 75, 76, 77, 78, 79, 80, 81, 82, 83, 84, 85, 86, 87, 88, 89, 90, 91, 92, 93, 94, 95, 96, 97, 98, 99, 100						



PROJECT DESCRIPTION: RUSSELL COURT SUBDIVISION UNIT 1 - PHASE 1C

DRAWING DESCRIPTION: TITLE SHEET & GENERAL INFORMATION

LOCATION: CITY OF IMPERIAL, CA

DATE: 08/20/2018

PREPARED BY: [Signature]

CHECKED BY: [Signature]

APPROVED BY: [Signature]

SCALE: 1/2" = 1'-0"

