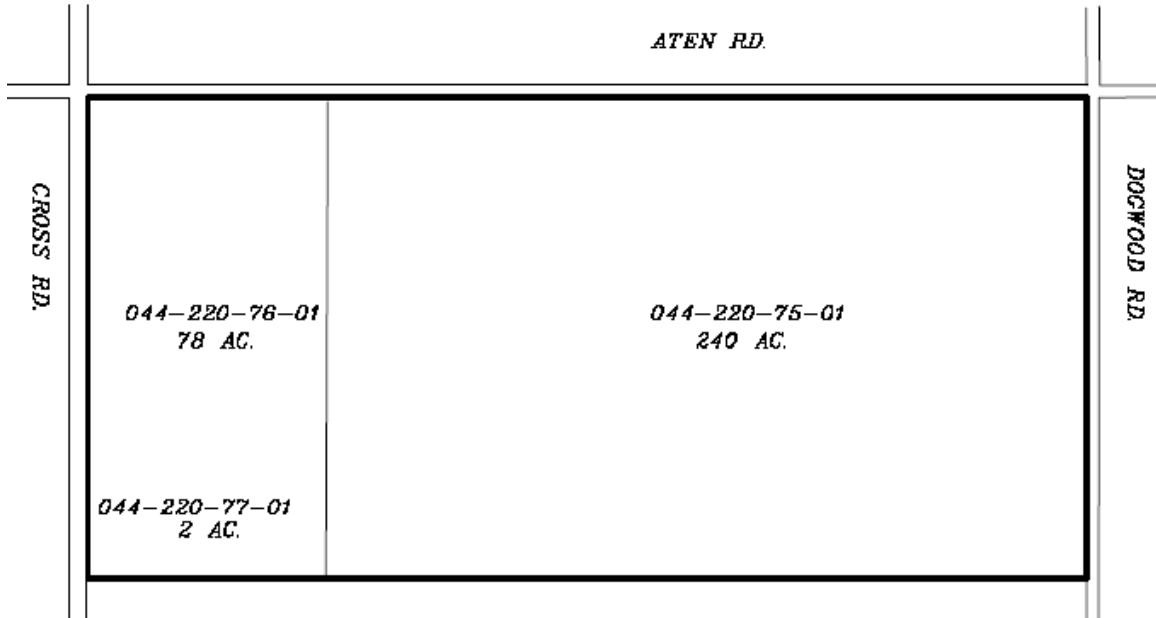


INFORMATION SHEET
CITY OF IMPERIAL CFD No. 2004-1
(VICTORIA RANCH)
JULY 1, 2015 TO JUNE 30, 2016

WHAT PROPERTIES ARE LOCATED WITHIN THE “VICTORIA RANCH CFD”...

The boundaries for this CFD consist of all parcels indicated in the display below. For a more accurate description of parcels located within this CFD, please contact the CFD Administrator for the City of Imperial (See below for contact information).



HOW MUCH ARE THE SPECIAL TAX RATES FOR THIS CFD...

The Special Tax authorized to be levied against any given residential parcel within the boundaries of this CFD is based upon the issuance of a building permit on the parcel. The Facilities Special Tax does not increase and the Services Special Tax increases by the Consumer Price Index (CPI). The CFD is expected to be levied annually through 2036. Any home can prepay the Facilities Special Tax at any time to reduce future Special Tax payments. Please refer to the Table below for the Special Taxes which are anticipated to be levied annually.

Tax Category	Maximum Facilities Special Tax	Actual Facilities Special Tax	Services Special Tax	Total Special Tax	Optional Prepayment of Facilities Special Tax
Completed Homes	\$1,610	\$1,558	\$151	\$1,709	\$18,300
Undeveloped Acre	\$13,000	\$13,000	\$602	\$13,602	n/a

WHO MAY PROVIDE MORE INFORMATION FOR THIS CFD...

FOR MORE INFORMATION in regards to a City of Imperial CFD, please contact the CFD Administrator, Alan Kapanicas by calling 760-202-1060 or GGMS@GGMSinc.com

Please note that the information is not to be relied upon for any purpose, including the purposes of determining the actual special tax rates authorized to be levied by any given CFD nor is in anyway designed to be used in lieu of a “Notice of Special Tax” which is required to be distributed prior to the purchase of a parcel located within a CFD.