



Staff Report

Agenda Item No. D-3

To: City of Imperial Planning Commission

From: Yvonne Cordero, Planner

Date: April 14, 2025

Applicant:	Steve Schneider
Project Location:	304 S. Imperial Avenue
Project Description:	Conditional Use Permit 25-03 to allow a drive-thru at a proposed Jack in the Box Restaurant
Zoning:	Village Commercial (VC)
Environmental:	Categorically Exempt
Recommendation:	Approve, subject to Conditions of Approval

Background

Steve Schneider from Lyons Warren Engineers & Architects submitted a Conditional Use Permit application for a Jack in the Box Restaurant to be located at 304 S. Imperial Avenue. The proposed project consists of the development of a 2,000-square-foot fast-food restaurant with a drive-thru, thirty-three parking spaces, five dedicated waiting parking stalls, and landscaping along the perimeter of the project site.

The proposed Jack in the Box is anticipated to bring significant community benefits to the City of Imperial. Job creation is a primary advantage, as the new establishment will offer employment opportunities during the construction and operational periods. The restaurant will also contribute to increased tax revenue through sales and property taxes. This additional revenue can support vital public services, infrastructure improvements, and community programs, enhancing the quality of life for Imperial residents. Furthermore, the restaurant will offer enhanced services for residents by providing a convenient and accessible location for food and beverages. The inclusion of a drive-thru facility caters to the needs of busy community members seeking quick and efficient service without leaving their vehicles. The convenience and accessibility align with Jack in the Box's history of developing popular establishments that serve local patrons and attract regional travelers intersecting the City via Highway 86 - designated as the City's main arterial roadway and primary path, thus promoting economic growth and elevating the City's financial profile.

Project Location



Discussion/CEQA Analysis

Land Use - The subject site is zoned within the Village Commercial (VC) Zone, which is intended as the social and civic heart of the City of Imperial. It features attractive housing, small retail shops, outdoor dining, parks, and civic facilities in a vibrant, pedestrian-friendly, and family-oriented atmosphere. The surrounding designated land uses are as follows:

Direction	Land Use	Zoning
North	Raspalandia and Together for Children Preschool	Village Commercial (VC)
South	City of Imperial City Hall	Residential Apartment (RA)
East	Faith Assembly Church and School	Neighborhood Commercial (C-1)
West	Residences and Melissa Michael's Spa	Village Commercial (VC)

The relationship between land use and zoning compatibility within the Imperial General Plan is important for orderly development. Land uses must be arranged for compatibility with abutting land uses and properties should be consistent with the land use policy map. Using the General Plan's Land Use Compatibility Matrix, the adjacent land uses of Village and Neighborhood Commercial are compatible land uses. Although City Hall is located within a Residential Apartment Zone, public facilities are compatible land uses within all zoning designations throughout the City.

Traffic and Circulation - The project site is fronting and accessed directly from Highway 86. Highway 86 is designated as one of the City's major arterials that move traffic through a City from one point to another. Mitigating the potential for excessive drive-thru queues extending out to Imperial Avenue was a significant concern for this project.

Traffic mitigation measures include:

- 1) Placing the ordering boards forward to allow additional queue space.
- 2) Imperial Avenue traffic is routed to the 6th Street entrance with directional signage.
- 3) Installation of five waiting stalls for patrons waiting for their orders.
- 4) Option to close Imperial Avenue entrance and install future traffic control devices and directional signage.
- 5) Option to install a future secondary ordering lane.

Parking – Parking requirements were reviewed during the Site Plan Review process and determined to have met the requirements.

Vehicle Miles Traveled (VMT) Analysis - Due to the retail nature of the project being a restaurant less than 50,000 square feet and the project site being within the low VMT Traffic Analysis Zone, no VMT Analysis is required.

Environmental Compliance

The proposed drive-thru restaurant qualifies for a Categorical Exemption pursuant to the California Environmental Quality Act (CEQA) per Section 15332 – Infill Development Projects. Projects that qualify for this exemption are those that are consistent with the General Plan, are within city limits, are no more than five (5) acres, and are generally surrounded by urban uses without significant environmental effects on environmental resources. The project does not significantly impact air quality and will not result in an increase in population or demand for public services that exceed the public utilities' capacity. Mitigation measures such as a landscaped perimeter for noise level reduction and the implementation of directional signage to eliminate traffic concerns are conditionally imposed on the proposed project.

Evaluation

The Zoning Ordinance provides flexibility in the regulation of uses to ensure that unusual characteristics of certain uses are properly addressed in furtherance of the Imperial Zoning Ordinance. Section 24.19.340 of the City of Imperial Zoning Ordinance requires that the Commission make specific findings when reviewing a Conditional Use Permit. The required findings are listed below in ***bold italics***, followed by an evaluation:

1. ***That the proposed location, size, design, and operating characteristics of the proposed use is in accord with the Title and Purpose of this Ordinance, the purpose of the zone in which the site is located, the Imperial General Plan, and the development policies and standard of the City.***

The subject site is within the Village Commercial (VC) Zone, intended as the social and civic heart of the City compatible with commercial and residential environments. The proposed restaurant will provide patrons of the surrounding commercial businesses and residents in proximity to the project site with an enjoyable meeting place. Its operation is consistent with the objectives of the Village Commercial Zone and the City's development goals.

2. ***That the location, size, design, and operating characteristics of the proposed use will be compatible with and will not adversely affect or be materially detrimental to adjacent uses, residents, buildings, structures, or natural resources with***

consideration given to those items listed in Section 24.19.340.B of the Imperial Zoning Ordinance.

The location is ideal for a Jack in the Box restaurant. Its use would be consistent with the General Plan and would offer an additional eating establishment for Downtown Imperial and neighboring communities. The restaurant does not appear to be detrimental to adjacent uses, residents, or buildings.

- 3. That the proposed location, size, design, and operating characteristics of the proposed use and the conditions under which it would be operated or maintained will not be detrimental to the public health, safety, or welfare, or materially injurious to properties or improvements in the vicinity.***

With the established Conditions of Approval and traffic mitigation measures, the proposed project will not negatively impact public health, safety, or welfare, or be materially injurious to properties in the vicinity.

- 4. That the proposed Conditional Use will comply with each of the applicable provisions of the Zoning Ordinance, except for any approved Variance.***

The proposed project complies with all applicable provisions of the City of Imperial's Zoning Ordinance. There are no variances requested or required for this project, and all zoning regulations and requirements will be fully adhered to. By meeting these conditions, the project ensures alignment with the City's zoning standards and regulations.

Public Notification

The public hearing scheduled for April 23, 2025, was duly noticed in the Holtville Tribune and Calexico Chronicle, newspapers of general circulation, on April 10, 2025. A Notice of Public Hearing was mailed to all property owners within 300 feet of the property. The City of Imperial has not received any public comments for or against this project as of the date of this report's publication.

Recommendation

Staff recommends the Planning Commission conduct a public hearing to receive comments for and against the project. Unless sufficient evidence to the contrary is presented at the public hearing, Staff recommends that the Planning Commission approve Conditional Use Permit 25-03 to allow a drive-thru at the proposed Jack in the Box restaurant.

Attachments

- Attachment A – Resolution PC2025-07 with Conditions of Approval
- Attachment B – Submitted Project Plans

Respectfully submitted,

A handwritten signature in blue ink, appearing to read 'Othon Mora', enclosed within a blue oval-shaped stamp or seal.

Othon Mora, MCM, CBO
Community Development Director

SITE LEGEND

- PROPERTY BOUNDARY LINE

EXISTING EASEMENT

PROPOSED EASEMENT

EXISTING CURB AND GUTTER

PROPOSED CURB AND GUTTER

CURB RAMPS

EXISTING STREET LIGHT

PROPOSED SITE LIGHTING BUILDING

ENTRANCE WHEEL STOP
- ACCESSIBLE PARKING SPACES

BIKE RACK

PROPOSED TRANSFORMER LOCATION

PROPOSED WATER METER LOCATION

PROPOSED GREASE INTERCEPTOR LOCATION

NUMBER OF PARKING STALLS

LIMITS OF WORK

VEHICLE STACKING

SITE PLAN KEY NOTES

- 1

JIB HWY SIGN AT MAX ALLOWABLE HEIGHT AND SIGN S.F. AREA VISIBLE FROM HWY
- 2

JIB POLE SIGN (MAX ALLOWABLE HEIGHT AND SIGN SF AREA)
- 3

EXISTING POWER POLES
- 4

FUTURE DIGITAL MENU BOARD
- 5

STATIC SPEAKER BOARD
- 6

FUTURE MENU BOARD
- 7

FUTURE PREVIEW BOARD
- 8

STATIC PREVIEW BOARD OR FUTURE DIGITAL PREVIEW BOARD
- 9

TRASH ENCLOSURE
- 10

DRIVE THRU ENTRY HEIGHT CLEARANCE (9'-0") AND WARNING POLE SIGN
- 11

FUTURE DRIVE THRU ENTRY HEIGHT CLEARANCE (9'-0") AND WARNING POLE SIGN
- 12

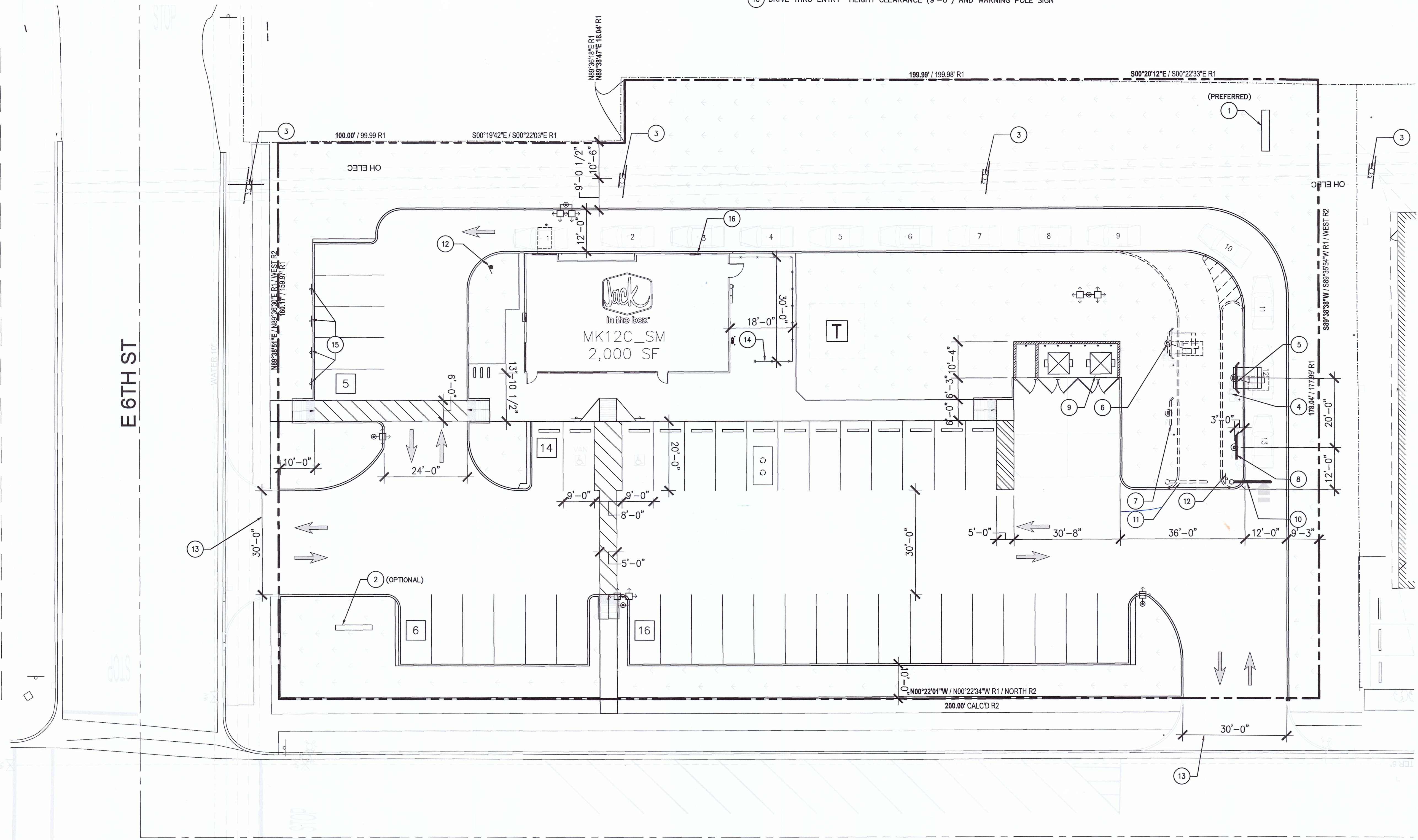
THANK YOU DO NOT ENTER DIRECTIONAL
- 13

PROPOSED 30' WIDE APPROACH
- 14

OPTIONAL REAR SERVICE AREA W/ 6' WHITE PVC FENCING
- 15

DEDICATED WAITING STALL PARKING SIGN
- 16

FUTURE CASHIER WINDOW



1 SITE PLAN

0 5' 15' 30'

SCALE: 1" = 15'

N



In the box®

9357 SPECTRUM CENTER BLVD
SAN DIEGO, CA 92123
© 2024 Jack in the Box Inc.

These designs, drawings and specifications are the property of Jack in the Box Inc. and shall not be copied or reproduced without its previous written consent.

DATES	
RELEASE:	N/A
P.M. UPDATES:	N/A
SUBMITTAL DATE:	
1:	
2:	
3:	
BID:	
CONSTRUCTION:	

REVISIONS	
△	
△	
△	
△	
△	
△	

LYONS WARREN

engineers + architects

9560 Candia St.
San Diego, CA 92126-4560

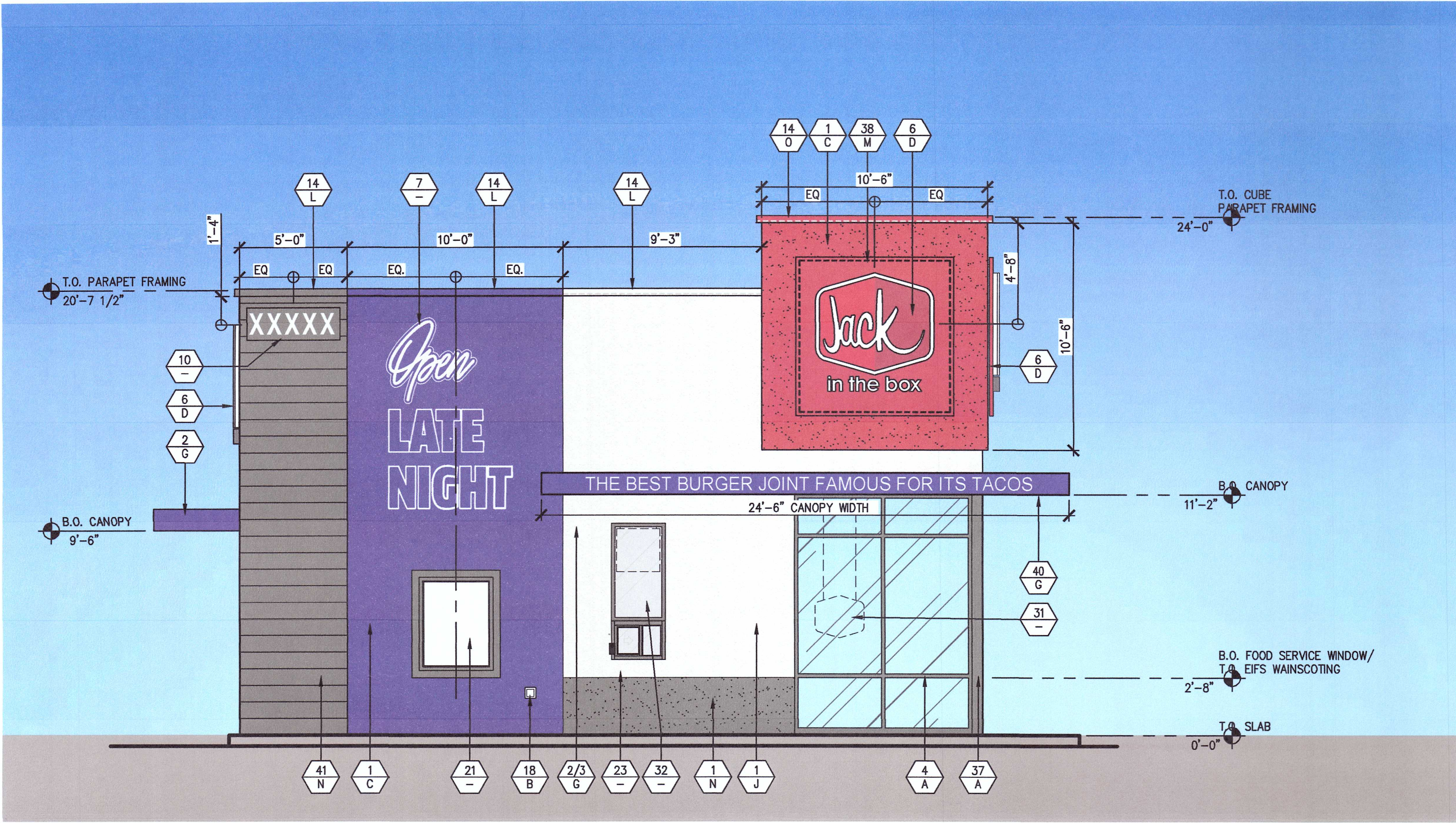
858.573.8999
lwo@lyonswarren.com

SITE INFORMATION	
MK TYPE:	MK12C_SM
JIB #:	3868
ADDRESS:	300 S. IMPERIAL AVE. IMPERIAL, CA 92251

DRAWN BY: LWEA
PROJECT #: JIB2402
SCALE: AS NOTED

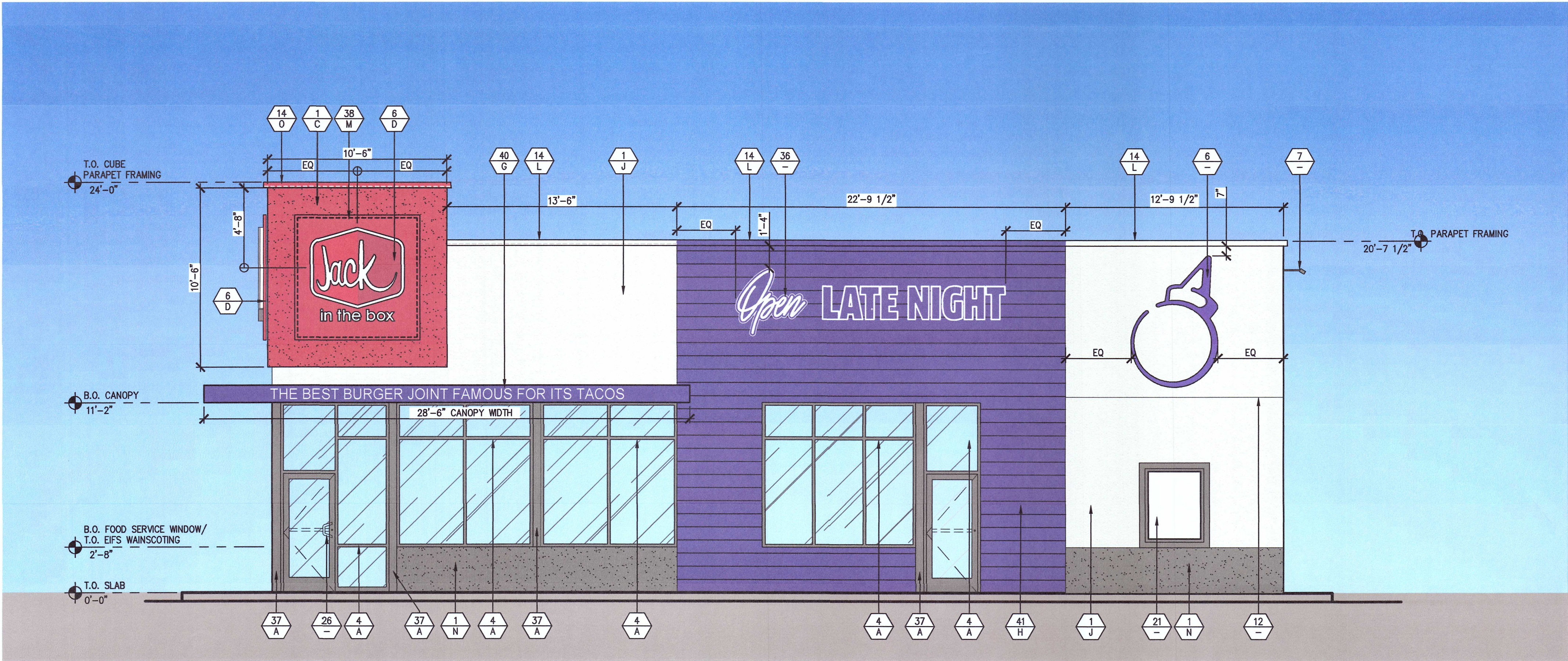
SITE PLAN

SD1.0



1 FRONT ELEVATION

SCALE: 1/4" = 1'-0"



2 SIDE ELEVATION

SCALE: 1/4" = 1'-0"

GENERAL NOTES

- REFER TO A1.0 FOR DOOR & WINDOW TAGS & A8.0 SHEET SERIES FOR DOOR & WINDOW TYPES & SCHEDULES.
- ALL SIGNAGE IS UNDER SEPARATE SUBMITTAL AND PERMIT (N.I.C).
- ALL PLASTER ACCESSORIES, FLASHING, ETC. SHALL BE PAINTED TO MATCH ADJACENT SURFACES (U.O.N)
- ALL EXTERIOR WALL OPENINGS FOR RECEPTACLES, HOSE BIBS, ETC. SHALL BE SEALED. SEE FLOOR PLAN, GENERAL NOTES, AND SPECIFICATIONS FOR ADDITIONAL NOTES.
- ALL FINISHES, LIGHTING, & EQUIPMENT ARE TO SUBMITTED TO ARCHITECT FOR REVIEW & APPROVAL.
- SEE ID4 SHEET SERIES FOR EQUIPMENT, FURNITURE, SIGNAGE, & INTERIOR FINISH SCHEDULES DESIGNATED BY (XX-XXX).

COLORS

- DARK BRONZE ANODIZED ALUMINUM
- COLOR/ FINISH TO MATCH ADJACENT SURFACE
- SHERWIN WILLIAMS: SW 7588 "SHOW STOPPER"
- JIB LOGOS: WHITE TEXT - RED BACKGROUND
- SHERWIN WILLIAMS: SW 7068 "GRIZZLE GRAY"
- THIN-BRICK VENEER: WIRE CUT, "ICEBERG"
- CANOPY: SW 6832 "IMPULSIVE PURPLE"
- SHERWIN WILLIAMS: SW 6832 "IMPULSIVE PURPLE"
- FOOD LOCKER & DOOR PULL: RAL 3001 "SIGNAL RED"
- SHERWIN WILLIAMS: SW 7005 "PURE WHITE"
- CONCRETE: NATURAL/ GRAY
- COPING: MATCH WALL COLOR BELOW
- ACM PANELS: "CLASSIC RED"
- THIN-BRICK VENEER: "MIDNIGHT SKY"
- COPING: DUROLAST "BRITE RED"
- WALL TILE: JIB RED (CUSTOM COLOR BY TILE MFR)

EXTERIOR ELEVATION LEGEND

- # X MATERIAL/FINISH
X COLOR
- LED ROPE LIGHT FACE MOUNTED BY JIB VENDOR. SEE EXTERIOR ELEVATIONS, DETAILS, & ELECTRICAL DWGS.
- LED ROPE LIGHT IN COPING COVE BY JIB VENDOR. SEE EXTERIOR ELEVATIONS, DETAILS, & ELECTRICAL DWGS.

EXTERIOR FINISH SCHEDULE

- EXTERIOR EIFS W/ SAND FLOAT FINISH & INTEGRAL COLOR, SEE SPECIFICATIONS.
- PRE-FAB CANOPY BY JIB VENDOR (O.F.O.I).
- MOUNT LIGHTING FIXTURE WITHIN CANOPY, COORDINATE WITH VENDOR MOUNTING REQUIREMENTS.
- GC PROVIDED ALUMINUM STOREFRONT SYSTEM, SEE WINDOW TYPES & SPECIFICATIONS.
☒ 1" CLEAR INSULATED GLASS. ☐ 1" CLEAR INSULATED GLASS W/ SOLARBAN 70XL COATING.
☐ 1" CLEAR INSULATED PER LOCAL AHJ REQUIREMENTS. ☐ ANTI GRAFFITI FILM W/ SOLARBAN 60 COATING.
- EXPPOSED CONCRETE CURB/ STEM WALL.
- INTERNALLY ILLUMINATED SIGNAGE BY SIGN VENDOR (O.F.O.I, UNDER SEPARATE SUBMITTAL). GC TO COORDINATE ELECTRICAL W/ SIGN VENDOR PRIOR TO INSTALLATION.
- WALL MOUNTED LIGHT FIXTURE.
- NOT USED.
- DRIVE-UP WINDOW.
- INTERNALLY ILLUMINATED ADDRESS, MIN. 12"H, WHITE LETTERS (OF-E08), OR AS REQUIRED PER LOCAL JURISDICTION (O.F.O.I, UNDER SEPRATE SUBMITTAL). GC TO COORDINATE ELECTRICAL W/ VENDOR PRIOR TO INSTALLATION.
- MAIN ELECTRICAL SERVICE, SEE ELECTRICAL & CIVIL DWGS.
- CONTROL JOINT.
- HOLLOW METAL DOORS & FRAMES, MISCELLANEOUS TRIM.
- ALUMINUM COPING WITH FACTORY APPLIED FINISH, VERIFY W/ ROOF PLAN COPING AT LED ROPE LIGHTING LOCATION.
- CO2 FILL BOX.
- BULK OIL FILL BOX (OPTION). VERIFY W/ JIB CONSTRUCTION IF REQUIRED.
- GREASE TANK RECOVERY TAP-IN (STANDARD).
- RECESSED, LOCKABLE, NON-FREEZE HOSE-BIB ENCLOSURE.
- NOT USED.
- THIN-BRICK VENEER, SEE SPECIFICATIONS.
- DISPLAY POSTER PANEL & SURROUND.
- EXTERIOR WALL PACK LIGHT FIXTURE.
- WALK-UP FOOD WINDOW, BELL PUSH BUTTON (GC-EQ15) & INTERCOM (OF-EL2) / (OF-EL3).
- NOT USED.
- DOWNSPOUT OUTLET
- JIB CUSTOM STOREFRONT DOOR PULL, SEE HARDWARE SCHEDULES (OF-EQ13).
- NOT USED.
- ROOF TOP MECHANICAL EQUIPMENT BEYOND, SEE MECHANICAL & HOOD DWGS.
- EMSER 12X35 WALL TILE "MINI HEXAGON". SEE FINISH SCHEDULE.
- GUTTER, DOWNSPOUT & OVERFLOW SCUPPER.
- ILLUMINATED WINDOW SIGN (OF-EQ12), SEE ID2.0 & ELEC. DWGS.
- ILLUMINATED WINDOW SIGN (OF-EQ14), SEE KITCHEN ELEVATIONS & ELEC. DWGS.
- "PAY HERE" CANOPY DECAL.
- "PICK-UP" CANOPY DECAL.
- GRAPHIC PANEL BY JIB SIGN VENDOR (O.F.O.I, UNDER SEPARATE SUBMITTAL).
- INTERNALLY ILLUMINATED SIGN WITH WHITE LETTERS WITH "PURPLE" BACKGROUND PROVIDED BY SIGN VENDOR (O.F.O.I, UNDER SEPARATE SUBMITTAL). GC TO COORDINATE ELECTRICAL W/ SIGN VENDOR PRIOR TO INSTALLATION.
- BRAKE METAL WRAP & COLUMN
- NOT USED
- GAS METER.
- PRE-FABRICATED CORNER CANOPY W/ DECAL MESSAGE AT LONG-SIDE FASCIA, BY SIGN VENDOR. GC TO COORDINATE ELECTRICAL W/ SIGN VENDOR PRIOR TO INSTALLATION.
- NOT USED
- NOT USED
- FUTURE DRIVE-UP CASHIER WINDOW AND CANOPY



in the box

9357 SPECTRUM CENTER BLVD
SAN DIEGO, CA 92123

© 2024 Jack in the Box Inc.

These designs, drawings and specifications are the property of Jack in the Box Inc. and shall not be copied or reproduced without its previous written consent.

DATES

RELEASE: N/A

P.M. UPDATES: N/A

SUBMITTAL DATE:

1: _____

2: _____

3: _____

BID: _____

CONSTRUCTION: _____

REVISIONS

- △ _____
- △ _____
- △ _____
- △ _____
- △ _____
- △ _____

LYONS WARREN

engineers + architects

9560 Candelero ST.

San Diego, CA 92126-4560

858.573.8988 fax

lwo@lyonswarren.com



SITE INFORMATION

MK TYPE: MK12C_SM

JIB #: 3868

ADDRESS:
300 S. IMPERIAL AVE.
IMPERIAL, CA 92251

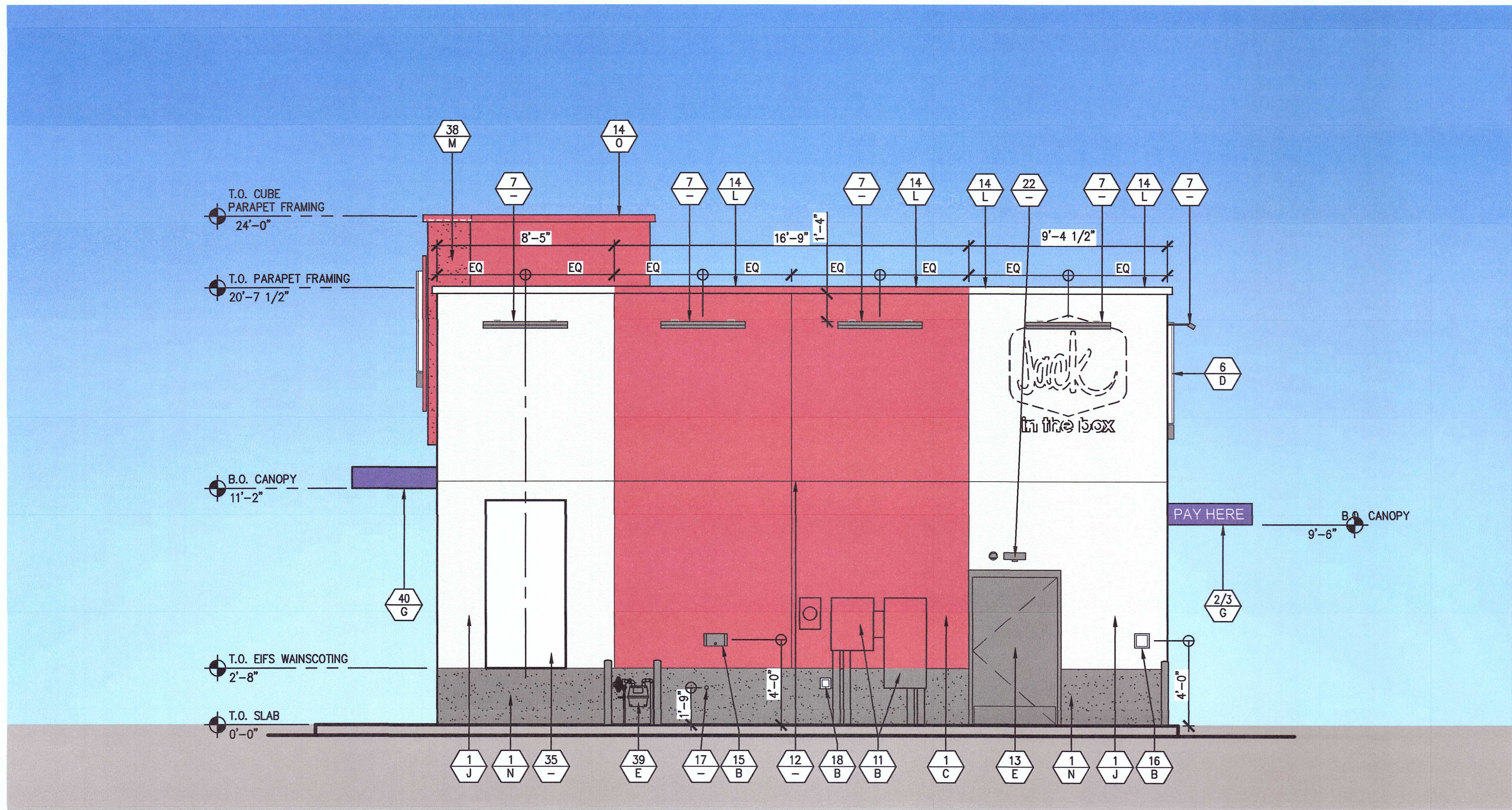
DRAWN BY: LWEA

PROJECT #: JIB2402

SCALE: AS NOTED

EXTERIOR
ELEVATIONS

A4.0



1 REAR ELEVATION

SCALE: 1/4" = 1'-0"

GENERAL NOTES

- REFER TO A1.0 FOR DOOR & WINDOW TAGS & A8.0 SHEET SERIES FOR DOOR & WINDOW TYPES & SCHEDULES.
- ALL SIGNAGE IS UNDER SEPARATE SUBMITTAL AND PERMIT (N.I.C).
- ALL PLASTER ACCESSORIES, FLASHING, ETC. SHALL BE PAINTED TO MATCH ADJACENT SURFACES (U.O.N)
- ALL EXTERIOR WALL OPENINGS FOR RECEPTACLES, HOSE BIBS, ETC. SHALL BE SEALED. SEE FLOOR PLAN, GENERAL NOTES, AND SPECIFICATIONS FOR ADDITIONAL NOTES.
- ALL FINISHES, LIGHTING, & EQUIPMENT ARE TO BE SUBMITTED TO ARCHITECT FOR REVIEW & APPROVAL.
- SEE ID4 SHEET SERIES FOR EQUIPMENT, FURNITURE, SIGNAGE, & INTERIOR FINISH SCHEDULES DESIGNATED BY (XX-XXX).

COLORS

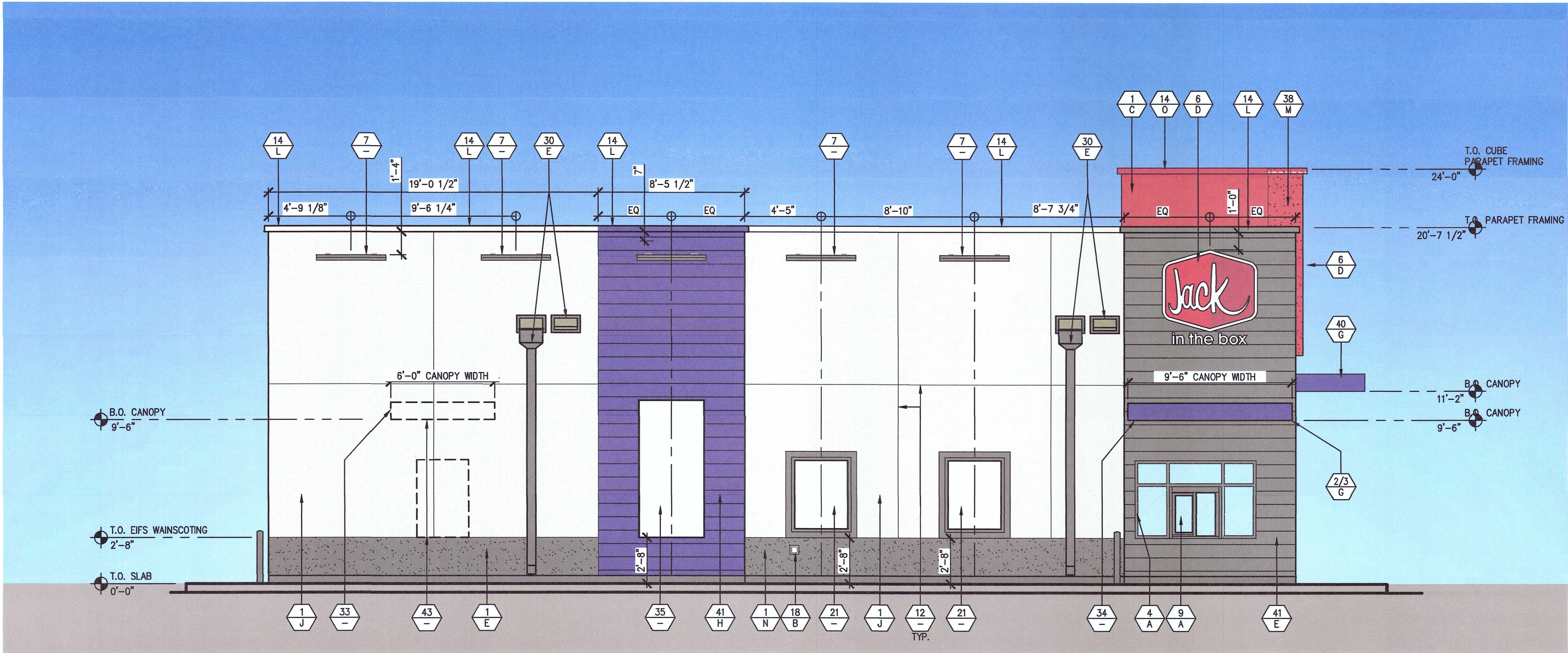
- DARK BRONZE ANODIZED ALUMINUM
- COLOR/ FINISH TO MATCH ADJACENT SURFACE
- SHERWIN WILLIAMS: SW 7588 "SHOW STOPPER"
- JIB LOGOS: WHITE TEXT - RED BACKGROUND
- SHERWIN WILLIAMS: SW 7068 "GRIZZLE GRAY"
- THIN-BRICK VENEER: WIRE CUT, "ICEBERG"
- CANOPY: SW 6832 "IMPULSIVE PURPLE"
- SHERWIN WILLIAMS: SW 6832 "IMPULSIVE PURPLE"
- FOOD LOCKER & DOOR PULL: RAL 3001 "SIGNAL RED"
- SHERWIN WILLIAMS: SW 7005 "PURE WHITE"
- CONCRETE: NATURAL/ GRAY
- COPING: MATCH WALL COLOR BELOW
- ACM PANELS: "CLASSIC RED"
- THIN-BRICK VENEER: "MIDNIGHT SKY"
- COPING: DURALAST "BRITE RED"
- WALL TILE: JIB RED (CUSTOM COLOR BY TILE MFR)

EXTERIOR ELEVATION LEGEND

- # X MATERIAL/FINISH
X COLOR
- LED ROPE LIGHT FACE MOUNTED BY JIB VENDOR. SEE EXTERIOR ELEVATIONS, DETAILS, & ELECTRICAL DWGS.
- LED ROPE LIGHT IN COPING COVE BY JIB VENDOR. SEE EXTERIOR ELEVATIONS, DETAILS, & ELECTRICAL DWGS.

EXTERIOR FINISH SCHEDULE

- EXTERIOR EIFS W/ SAND FLOAT FINISH & INTEGRAL COLOR, SEE SPECIFICATIONS.
- PRE-FAB CANOPY BY JIB VENDOR (O.F.O.I).
- MOUNT LIGHTING FIXTURE WITHIN CANOPY, COORDINATE WITH VENDOR MOUNTING REQUIREMENTS.
- GC PROVIDED ALUMINUM STOREFRONT SYSTEM, SEE WINDOW TYPES & SPECIFICATIONS.
- 1" CLEAR INSULATED GLASS.
- 1" CLEAR INSULATED GLASS W/ SOLARBAN 70XL COATING.
- 1" CLEAR INSULATED PER LOCAL AHJ REQUIREMENTS.
- ANTI GRAFFITI FILM W/ SOLARBAN 60 COATING.
- EXPOSED CONCRETE CURB/ STEM WALL.
- INTERNALLY ILLUMINATED SIGNAGE BY SIGN VENDOR (O.F.O.I, UNDER SEPARATE SUBMITTAL). GC TO COORDINATE ELECTRICAL W/ SIGN VENDOR PRIOR TO INSTALLATION.
- WALL MOUNTED LIGHT FIXTURE.
- NOT USED.
- DRIVE-UP WINDOW.
- INTERNALLY ILLUMINATED ADDRESS, MIN. 12"H, WHITE LETTERS (OF-EQ8), OR AS REQUIRED PER LOCAL JURISDICTION (O.F.O.I, UNDER SEPARATE SUBMITTAL). GC TO COORDINATE ELECTRICAL W/ VENDOR PRIOR TO INSTALLATION.
- MAIN ELECTRICAL SERVICE, SEE ELECTRICAL & CIVIL DWGS.
- CONTROL JOINT.
- HOLLOW METAL DOORS & FRAMES, MISCELLANEOUS TRIM.
- ALUMINUM COPING WITH FACTORY APPLIED FINISH, VERIFY W/ ROOF PLAN COPING AT LED ROPE LIGHTING LOCATION.
- CO2 FILL BOX.
- BULK OIL FILL BOX (OPTION). VERIFY W/ JIB CONSTRUCTION IF REQUIRED.
- GREASE TANK RECOVERY TAP-IN (STANDARD).
- RECESSED, LOCKABLE, NON-FREEZE HOSE-BIB ENCLOSURE.
- NOT USED.
- THIN-BRICK VENEER, SEE SPECIFICATIONS.
- DISPLAY POSTER PANEL & SURROUND.
- EXTERIOR WALL PACK LIGHT FIXTURE.
- WALK-UP FOOD WINDOW, BELL PUSH BUTTON (GC-EQ15) & INTERCOM (OF-EL2) / (OF-EL3).
- NOT USED.
- DOWNSPOUT OUTLET
- JIB CUSTOM STOREFRONT DOOR PULL, SEE HARDWARE SCHEDULES (OF-EQ13).
- NOT USED.
- ROOF TOP MECHANICAL EQUIPMENT BEYOND, SEE MECHANICAL & HOOD DWGS.
- EMSER 12X35 WALL TILE "MINI HEXAGON". SEE FINISH SCHEDULE.
- GUTTER, DOWNSPOUT & OVERFLOW SCUPPER.
- ILLUMINATED WINDOW SIGN (OF-EQ12), SEE ID2.0 & ELEC. DWGS.
- ILLUMINATED WINDOW SIGN (OF-EQ14), SEE KITCHEN ELEVATIONS & ELEC. DWGS.
- "PAY HERE" CANOPY DECAL.
- "PICK-UP" CANOPY DECAL.
- GRAPHIC PANEL BY JIB SIGN VENDOR (O.F.O.I, UNDER SEPARATE SUBMITTAL).
- INTERNALLY ILLUMINATED SIGN WITH WHITE LETTERS WITH "PURPLE" BACKGROUND PROVIDED BY SIGN VENDOR (O.F.O.I, UNDER SEPARATE SUBMITTAL). GC TO COORDINATE ELECTRICAL W/ SIGN VENDOR PRIOR TO INSTALLATION.
- BRAKE METAL WRAP & COLUMN
- NOT USED
- GAS METER.
- PRE-FABRICATED CORNER CANOPY W/ DECAL MESSAGE AT LONG-SIDE FASCIA, BY SIGN VENDOR. GC TO COORDINATE ELECTRICAL W/ SIGN VENDOR PRIOR TO INSTALLATION.
- NOT USED
- NOT USED
- FUTURE DRIVE-UP CASHIER WINDOW AND CANOPY



2 DRIVE-THRU ELEVATION

SCALE: 1/4" = 1'-0"



DATES

RELEASE: N/A

P.M. UPDATES: N/A

SUBMITTAL DATE:

1: _____
2: _____
3: _____

BID: _____

CONSTRUCTION: _____

REVISIONS

- △
- △
- △
- △
- △
- △

LYONS WARREN
engineers + architects
9560 Conditia ST.
San Diego, CA 92126-4560
858.573.8999
lwa@lyonswarren.com | 858.573.6996 fax

SITE INFORMATION

MK TYPE: MK12C_SM
JIB #: 3868
ADDRESS:
300 S. IMPERIAL AVE.
IMPERIAL, CA 92251

DRAWN BY: LWEA
PROJECT #: JIB2402
SCALE: AS NOTED

EXTERIOR ELEVATIONS
A4.1